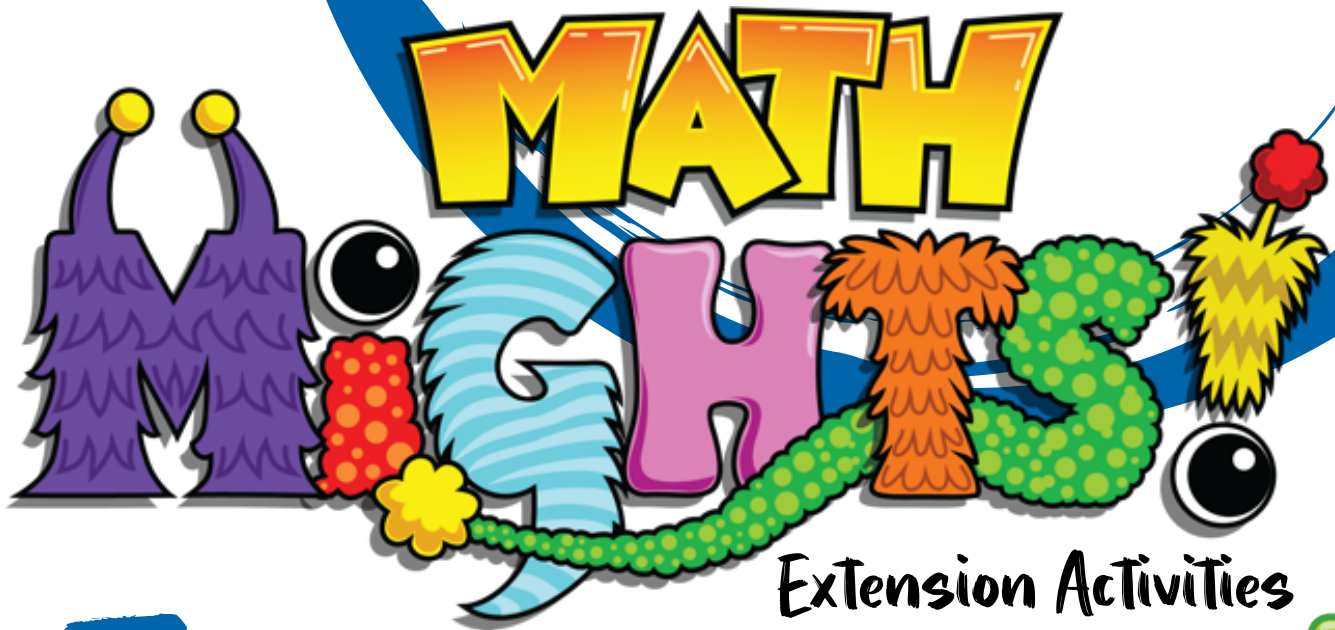


2

Subtracting on a Numberline

Episode #213



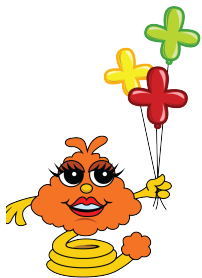
Extension Activities

For more resources, visit:

SIS 4 TEACHERS
Strategic Intervention Solutions

mathmights.org





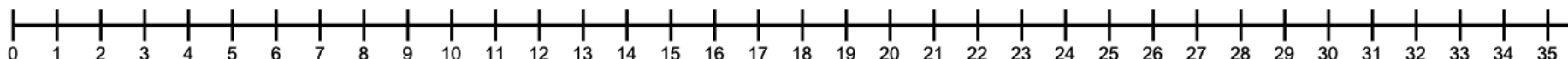
Name: _____

Directions: 1.) Circle the friendly numbers on the number line. 2.) Subtract by counting up or back using friendly number to find the distance

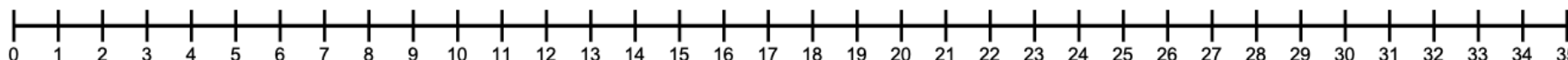
$$15 - 7 = \square$$



$$23 - 8 = \square$$

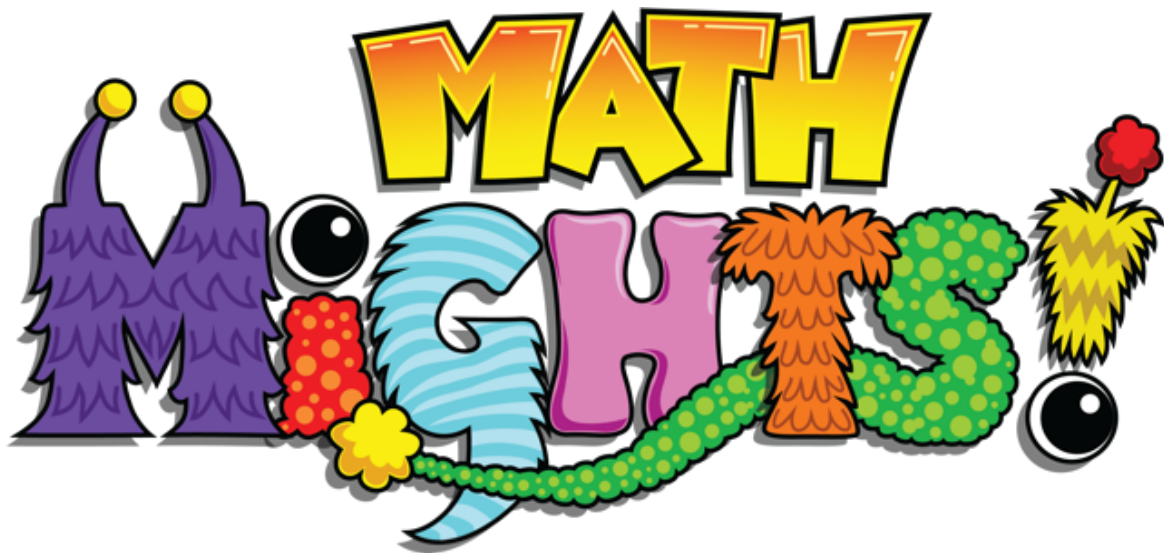


$$34 - 16 = \square$$



For more resources, visit:

mathmights.org



Connect with Us

@mathmights

