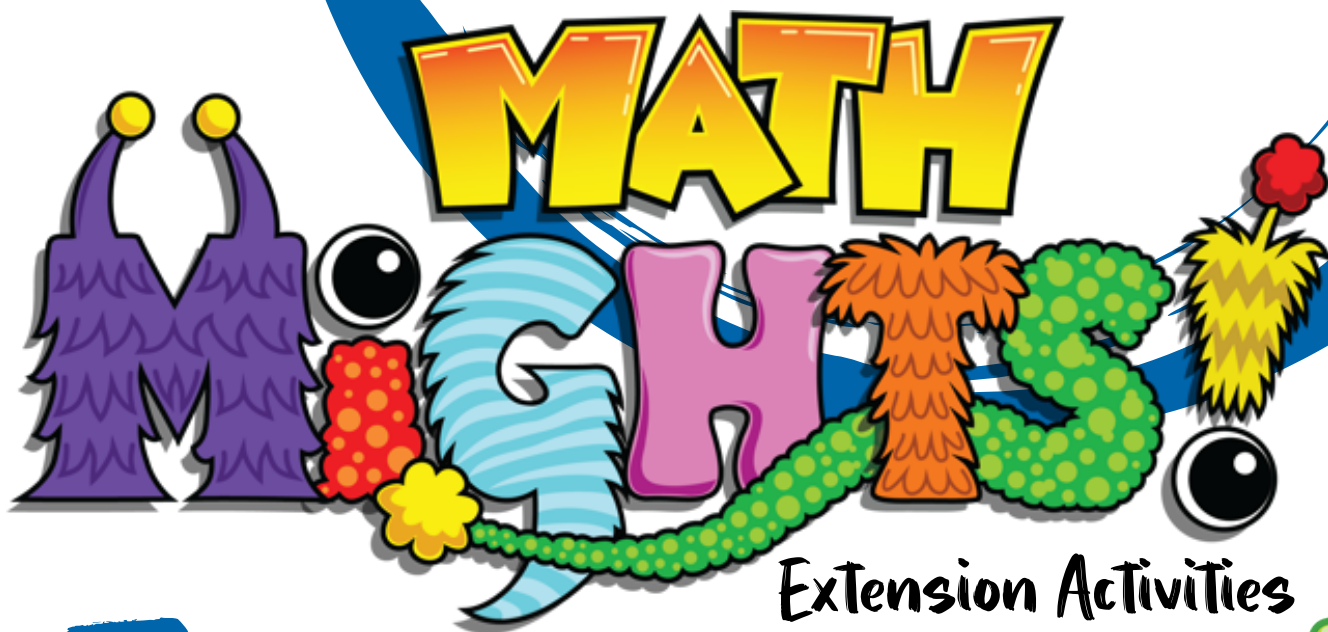


2

Subtraction on an Open Numberline

Episode #214



Extension Activities

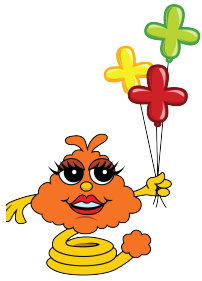


For more resources, visit:

SIS 4 TEACHERS
Strategic Intervention Solutions

mathmights.org





Name: _____

Directions: 1.) Circle the friendly numbers on the number line. 2.) Subtract by counting up or back using friendly number to find the distance

$$15 - 7 = \square$$

$$23 - 8 = \square$$

$$34 - 16 = \square$$

Name: _____

Solve Math Problems with Springling

Directions: Solve each of the subtraction problems using an open number line to count-up or back with friendly numbers.

$13 - 7 =$

$21 - 9 =$

$35 - 13 =$

$56 - 28 =$



For more resources, visit:

mathmights.org



Connect with Us

@mathmights

