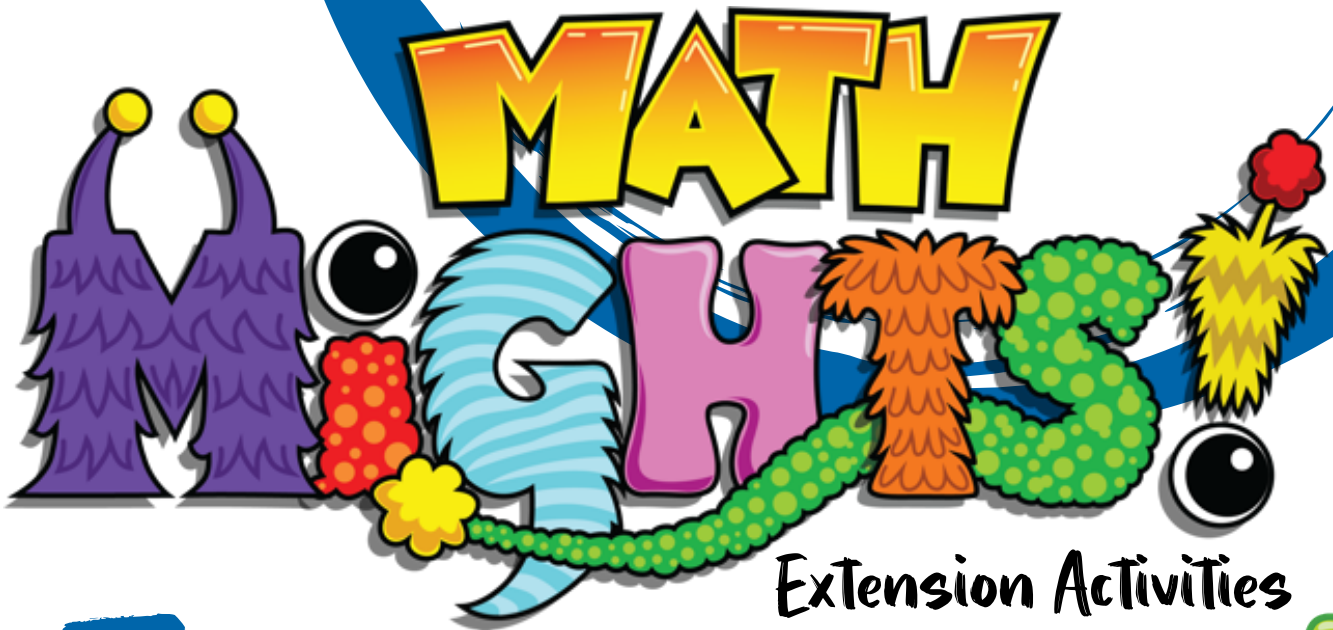


2

Find Differences Between Numbers

Episode #403



Extension Activities



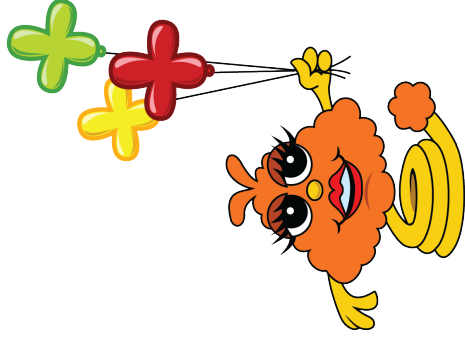
For more resources, visit:

SIS 4 TEACHERS
Strategic Intervention Solutions

mathmights.org



Differences Between Numbers



Directions:

1. Use the open number line to solve.
2. Show each jump you make and the number you land on.
3. Add the jumps to find the answer.

$$680 + \underline{\hspace{1cm}} = 900$$

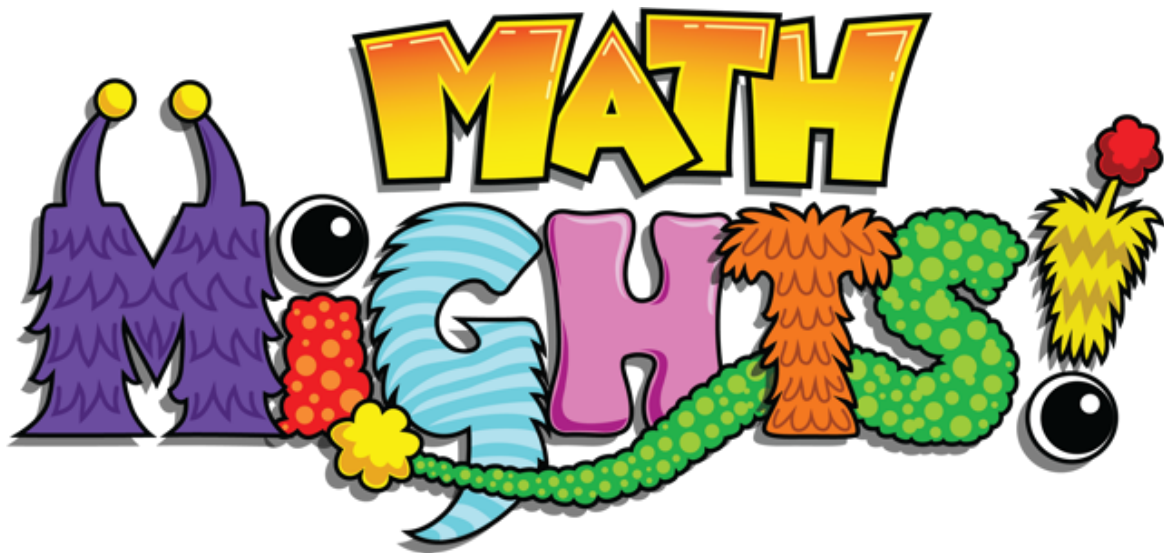
$$210 + \underline{\hspace{1cm}} = 400$$

$$600 - 440 = \underline{\hspace{1cm}}$$

$$830 - 500 = \underline{\hspace{1cm}}$$

For more resources, visit:

mathmights.org



Connect with Us

@mathmights

