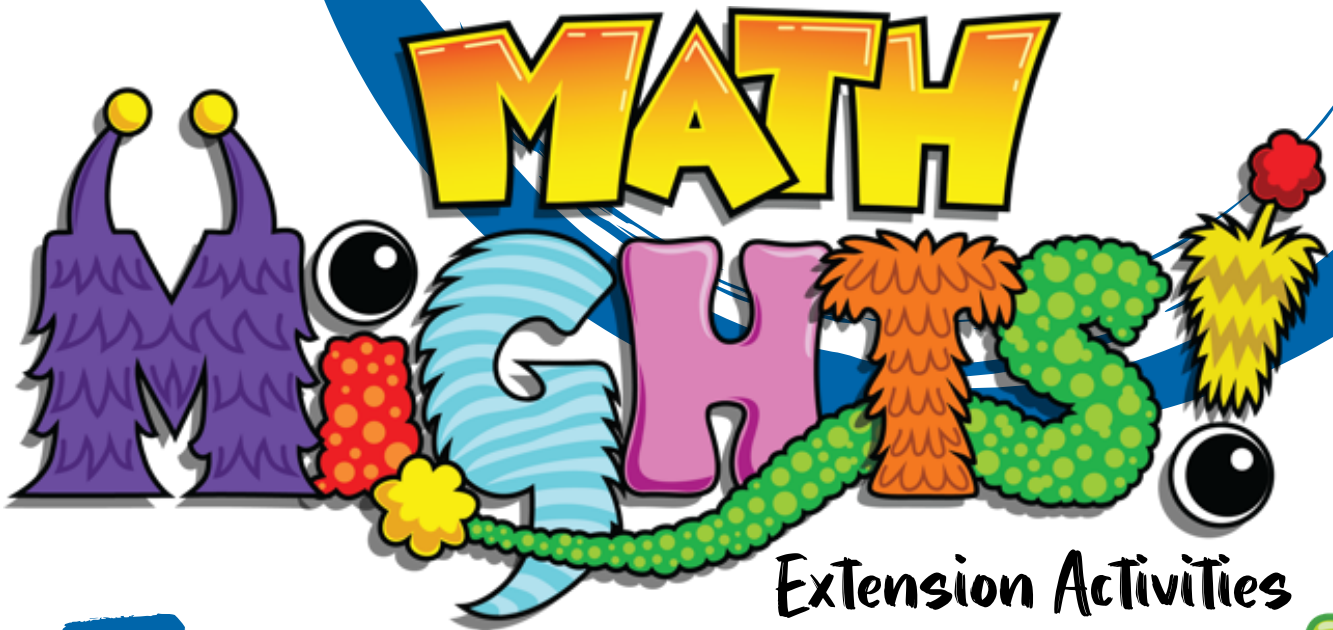


2

Add and Subtract 3-Digit Numbers

Episode #404



Extension Activities



For more resources, visit:

SIS  **TEACHERS**
Strategic Intervention Solutions

mathmights.org



Solve with Springling



$600 - 476 =$

$600 - 476 =$

Two cartoon characters named Minni and Subbi, which are green, fuzzy creatures with large eyes and a wide smile. They are wearing purple hats and holding small red and orange objects.

$700 - 428 =$

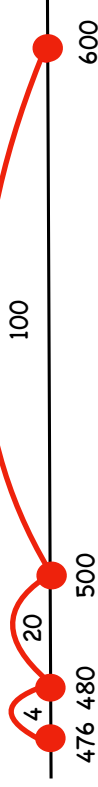
$700 - 428 =$

Two cartoon characters named Minni and Subbi, which are green, fuzzy creatures with large eyes and a wide smile. They are wearing purple hats and holding small red and orange objects.


Answer Key

Solve with Springling 

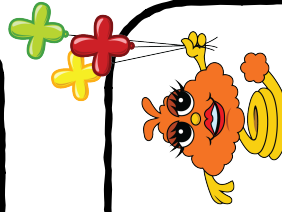
600 - 476 =



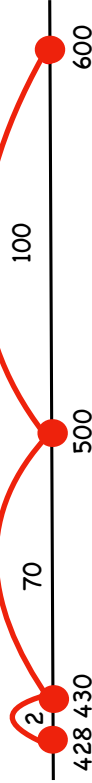
$$100 + 20 + 4 = 124$$




600 - 476 =

$$\begin{array}{r} 600 - 1 \rightarrow 599 \\ 476 - 1 \rightarrow -475 \\ \hline 124 \end{array}$$


700 - 428 =



$$100 + 70 + 2 = 172$$



700 - 428 =

$$\begin{array}{r} 700 - 1 \rightarrow 699 \\ 428 - 1 \rightarrow -427 \\ \hline 272 \end{array}$$

For more resources, visit:

mathmights.org



Connect with Us

@mathmights

